

CONCRETE MOISTURE ENCOUNTER



The Tramex Concrete Moisture Encounter is a non-destructive meter for measuring moisture content instantly in concrete slabs per ASTM F2659 and giving comparative or equivalent readings in other cementitious floor screeds. Easy-to-use, giving precise and repeatable results, the Concrete Moisture Encounter allows the user to make multiple tests over a large area in the shortest possible time.



Product Order Code: CME5

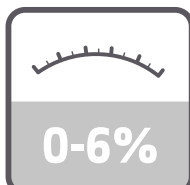
FEATURES



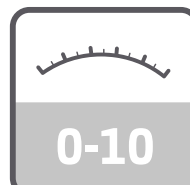
NON-DESTRUCTIVE



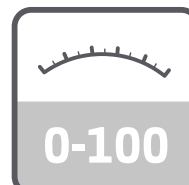
**ASTM
F2659**



CONCRETE %MC
READING RANGE



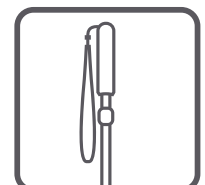
GYPHUM REFERENCE
READING RANGE



COMPARATIVE
READING RANGE



ACCOMPANYING
APP



EXTENSION HANDLE
(optional)

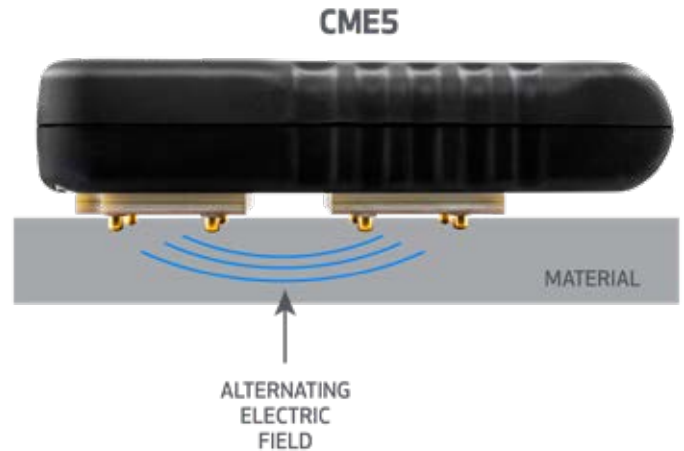


IMBOTEC GROUP

866-IMBOTEC
www.imbotec.com
sales@imbotec.com

HOW IT WORKS

The Concrete Moisture Encounter detects and evaluates the moisture conditions within the slab or screed by non-destructively measuring the electrical impedance. A low frequency electronic signal is transmitted into the material under test via the electrodes in the base of the instrument. The strength of this signal varies in proportion to the amount of moisture present in the material. The Concrete Moisture Encounter determines the strength of the current and converts this to a moisture content value for concrete slabs and a comparative value for other cementitious floor screeds, displayed on a large clear analog dial.



OPERATING PROCEDURE

To carry out tests simply brush any dust from a smooth area of concrete and also from the electrodes, switch on the Concrete Moisture Encounter and place it firmly onto the surface, fully compressing the spring-loaded, signal-enhancing contacts on the base. Read the moisture content from the clear analog dial.

The Concrete Moisture Encounter is calibrated to give percentage moisture content readings on clean, bare dust free concrete floor slabs, with a depth of penetration of approx. $\frac{3}{4}$ ". Readings taken on concrete slabs through paint, coatings, adhesives or other materials on the surface should be regarded as qualitative or comparative and not quantitative.



SPECIFICATIONS

Size:	6.3" x 3.5" x 1.5" (160mm x 85mm x 38mm)
Weight:	12.1oz (344g)
Construction:	ABS Body
Power:	2 x AALR6 ALKALINE (included)
Display:	Analog
Depth of penetration:	approx. $\frac{3}{4}$ " (20 mm)

MEASURING RANGE

Moisture Content for Concrete	0 to 6%
Comparative for Gypsum floor screed	0 to 10
Reference scale	0 to 100

Free App Available for Mobile and Tablet:



IMBOTEC GROUP

866-IMBOTEC

www.imbotec.com

sales@imbotec.com

www.imbotec.com

